

A cost effective turnkey solution for utility “Expose, Support and Move” projects.

First our engineers conduct an on-site project evaluation with local utility personnel to obtain project specific information/data. This information will then be reviewed to determine the viability of utilizing the Terra Move System™ to complete the proposed project. The model outputs include estimates for slack requirement, slope differential, distance uptake, crossbeam spacing, and finally movement outputs for control system.

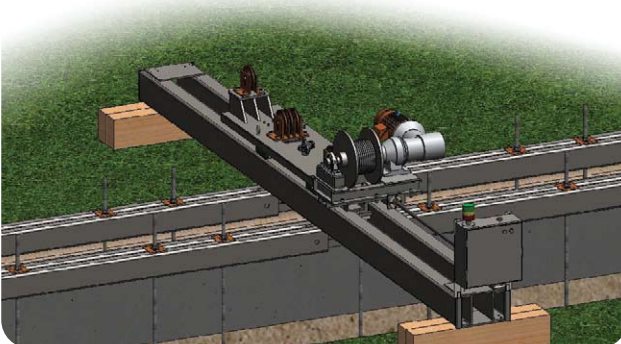


MODEL INPUTS:

- Existing surface elevations
- Existing x,y and z coordinates of top of duct
- Duct size
- Duct material
- Cable types, and sizes
- Adjacent manhole location & racking schematics
- Finally, proposed x,y and z coordinates of final location

MODEL OUTPUTS:

The model outputs include estimates for slack requirement, slope differential, distance uptake, crossbeam spacing, and finally movement outputs for control system.



The Benefits are Moving!

What typically takes weeks or months is done in days.

Projects can be scheduled as an integral part of the roadway construction project, often eliminating costs associated with hardscape removal, traffic control, temporary access, temporary pavement, and restoration.

If the project is postponed or loses funding, you haven't expended any funds in advance.

If the duct was initially out of alignment or had joint separation, **it's now fixed!**



Finally no splicing, thus eliminating down time to customers.....



Terra Move, LLC.



Terra Shield, LLC.

For more information:

Please Call: (815) 385-2392

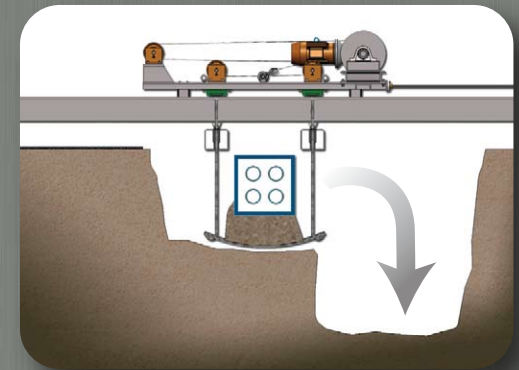
1705 South Route 31 • McHenry, Illinois 60050
email: bwegener@terrashieldllc.com

www.terramovellc.com www.terrashieldllc.com

All information contained in this brochure is property of Terra Shield, LLC.
All equipment and processes herein are Patented or Patent Pending.
Use of this information or photos is prohibited without prior written consent.



A new and revolutionary technology for underground utility relocation up to 20' Horizontally and 10' Vertically.



Don't Lose It! Move It!



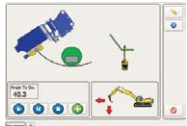
The Process:

Time required on a task basis for completing a typical 300-500ft duct relocation associated with a common highway expansion project.

Task 1.
Excavate & expose duct:
Day 1, 8-10 hours



Task 2.
Install Terra Shield plates:
Day 1, 4-6 hours



Terra Shield Provides protection and access under existing utilities

The system, which includes multiple geospatial sensors, mounted to the excavator; feed real time movement data to a LED screen mounted in the cab. If any portion of the operation enters the exclusion zone surrounding the duct the excavator's hydraulic system shuts down.

Task 3.
Set crossbeams:
Day 2, 3-5 hours



Once the plates are in place, crossbeams are set perpendicular to the trench at 30 ft intervals. The crossbeam length and structural specifications are determined based upon:

- Type of movement
- Length of movement
- And vertical load

Task 4.
Position & set linear slides:
Day 2, 2-3 hours

The linear slides can be adjusted for any size duct, or load by simply adjusting the integrated multi sheave assemblies.



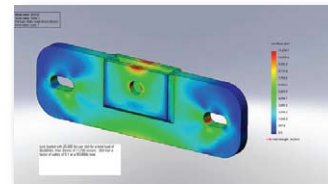
Task 5.
Connect power & control systems:
Day 2, 3-5 hours

Now it's time to connect the intellectual brains and nerve center behind the Terra Move System™. Mounted at the end of each crossbeam is a control box with individual beam controls and system monitoring sensors. The system has an available built in system shut down mode if the master control panel detects any deviation in movement associated with each individual crossbeam.



Task 6.
Place & connect longitudinal-beams:
Day 2, 3-5 hours

Beams are connected utilizing a specially designed structural load plate.



Task 7.
Connect & attach j-rods:
Day 3, 3-4 hours

The J-rods are the final item to be installed! Each plate is independently supported by four (4) #6 3/4" threaded bar specifically designed to attach and secure the plates to the longitudinal beams.



Task 8. **Move the duct!**

Activate and move to the pre-determined coordinates.



The system disassembly, and backfilling:
Approx. 6-8 hours.

